

ONE SHAPE

Design by

Marie Christine Domer

Description

The ONE SHAPE sofa end table originated from Marie-Christine Domer's 'Une forme, One shape' collection, which was displayed simultaneously in Paris and Tokyo in 2004. This collection hinges on the concept of a single form which will be available in a variety of versions (jewel - ring, pendant - to giant sculpture via the sofa end table) and in all kinds of materials such as metal, ceramic, glass, woven hide, rattan bark and solid wood. Ligne Roset has decided to reproduce the sofa end table.

Sofa end table made from an assembly of 36 rectangular blocks of matt black-stained, sawn-effect solid ash or sofa end table made from smooth-finish natural varnished solid oak.

Technical Specifications

More info at

www.ligne-roset.com

© Ligne Roset 2021

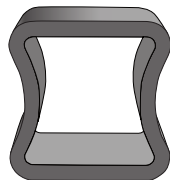


SOFA END TABLE AMERICAN WALNUT

DIMENSIONS

H 400 mm - W 400 mm - D 400 mm -

Other sizes



sofa end table american walnut

DIMENSIONS

H 400 - mm
W 400 - mm
D 400 - mm